

Herefordshire Council Museum Store – Public and Corp Wireless

[HC Museum Stores – Limited Public and Corp Wireless – Estimated costs ver2.docx](#)

The purpose of this document is to provide budgetary cost in respect of providing limited Public and Corporate Wireless coverage to cover as detailed below only. Would still look to cable whole building.

Management of this document is subject to the Hoople Information Classification Policy.

Any printed copies should be viewed as 'uncontrolled' and, as such, may not necessarily contain the latest updates and amendments.

Classification:	See Classification Policy
State:	Draft
Version:	Ver2
Version Date:	04/07/2016
Owner:	Gary Price
Role:	Solution Architect
Target Audience:	Hoople Technical and Herefordshire Council Property Services

Contents

1. Assumptions	2
2. Electrical Works, Comms Room cooling and room access	2
3. Data Cabling.....	2
4. Cables and Wi-Fi	5
5. Provision of Corporate Network Equipment	5
6. Estimated Charges – subject to requirements confirmation	6
7. Document properties	7
8. Document log.....	7
9. Document sign-off.....	7

1. Assumptions

Assumptions	Responsible
Survey complete of plan may require on site survey	Hoople Ltd.
Cabinet has capacity and power for new switches	Herefordshire Council
No new Phones or Computer equipment are included in this proposal	Herefordshire Council
Public will use Password (Wi-Fi protected Access WPA) for Public access and this will be changed every 30days	Hoople Ltd.
Due to asbestos being present some access points will be mounted on the walls not ceiling.	Herefordshire Council
Only Covering :- 1. Public coverage for the Foyer, Store 1, Store 2 and Art Store (ground floor) and the Education Room (first floor) 2. Corporate coverage for Education Room (first floor).	Herefordshire Council

2. Electrical Works, Comms Room cooling and room access

Believed nothing required at this time.

3. Data Cabling

Data cabling required as below to cover both Public and Corp Wireless access points.

Estimated cable requirements as per table.

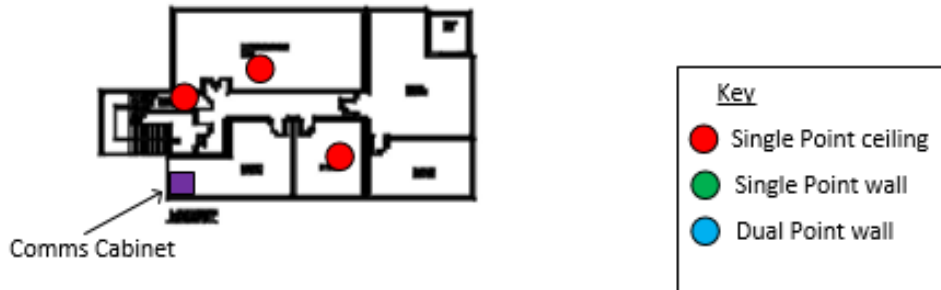
	Number	Data Points	Notes
Public Wireless Access Points	10	10	
Corp Wireless Access Points	16	18	
	26	28	

- 28 - Category 5e outlets in locations as per diagram
- Fixing of Wireless Access Points
- Cable and termination of required data cables plus patch panel Etc.

Cost **£3,240 +VAT**

Title: HC Museum Stores – Limited Public and Corp Wireless – Estimated costs ver2.docx

Basement wireless access point data points



Ground Floor wireless access point data points and Access Point locations

Museum Stores – Ground Floor



First Floor wireless access point data points and Access Point locations



4. Cables and Wi-Fi

Green

- 28 x 1.5m Category 5e patch leads @ £1.00 - £7.00

Grey

- 28 x 1.5m Category 5e patch leads @ £1.00 - £7.00

Total Cables £ 14.00

Wi-fi

1 x Corporate ceiling mount Access points (2702i @ £448.69each)	CAE	£ 448.69
AP adder license for Corp 5508, license to allow for connecting Access Point to Wireless Controller (only sold in blocks of 5)	CAE	£ 1,010.65
PA maintenance for license – L-LIC-CT5508-5A 24x7x4 NBD	BT	£ 175.95
6 x Public Access points (1702i @ £247.29each)	CAE	£ 1,483.74
1 x 5 AP adder license for Public 2504, license to allow for connecting Access Point to Wireless Controller (@ £108.72each)	CAE	£ 527.69
1 x 1 AP adder license for Public 2504, license to allow for connecting Access Point to Wireless Controller (@ £108.72each)	CAE	£ 105.35
2 x PA maintenance for license – L-LIC-CT2504-5A 24x7x4 NBD @£91.78 BT		£ 183.56
Prime licenses, Access Point Management software - Lifecycle, only sold in blocks of 25 @ £1,263.90each	CAE	£ 1,263.90
PA maintenance for license – LIC-PI2X-LF-25 SWSS Software Upgrades	CAE	£ 162.33
Prime licenses, Access Point compliance and security software - Compliance, only sold in blocks of 25 @ £352.55each	CAE	£ 352.55
PA maintenance for license – LIC-PI2X-CM-25 SWSS Software Upgrades	CAE	£ 40.74
Provision and configure Wi-Fi and network connection		– FTE 6days

Above detail subject to Full site survey.

5. Provision of Corporate Network Equipment

Network provision for 2 new switches (Public and Corporate), as current corporate switch full.

- 2 x Network Switch (24port 2960X-24PS-L) @ £1,231.57each £ 2,463.14
- 2 x Software and Hardware Support 1st year and PA, Onsite 8x5xNBD on

Title: HC Museum Stores – Limited Public and Corp Wireless – Estimated costs ver2.docx

- | | | |
|--|-----------|-------------|
| WS-C2960X-24PD-L | @ £196.04 | £ 392.08 |
| • Updata provision of Public VRF | | £ 425.00 |
| • Provision and configure network switches | | – FTE 3days |

6. Estimated Charges – subject to requirements confirmation

Area	Team	a) Equipment Cost	a) PA support cost (payable 1 st yr)	b) Labour Costs
(2) Electrical Works	Herefordshire Council, Contractor			
(3) Data Cabling and Cabinet	Infrastructure/ 3 rd Party	£3,240.00		
(4) Cables and Wi-Fi + 5% for dollar rate	Architects	£4,996.00	£591.00	6days
(5) Corporate Network + 5% for dollar rate	Infrastructure	£3,012.00	£412.00	3days via SLA
Design, Costing, Orders, setup	Architects			5days

- | | |
|---|-------------|
| a) Total Equipment Costs (as above including 1 st year): | £ 12,251.00 |
| b) Total Labour Costs (breakdown above): | £ 3,074.00 |

Total budgetary Cost (a+b) £ 15,325.00

7. Document properties

Author(s):	Gary Price
Role(s):	Solution Architect
Document owner:	
Audience organisation(s):	Hoople Ltd.
Audience department(s):	Technology & Transformation, Infrastructure Team.
Audience staff categories:	Infrastructure, Team Leader.
Date operational:	
Date to be reviewed:	

8. Document log

Version	Description of change	Pages affected	Name	Date
1	Document creation	All		
2	Cost updates and reduced numbers	All		

9. Document sign-off

Name	Role	Date
Phil Rees	Architecture Team Leader	
Phil Williams	Infrastructure Team Leader	
Mick Ligema	Business lead	